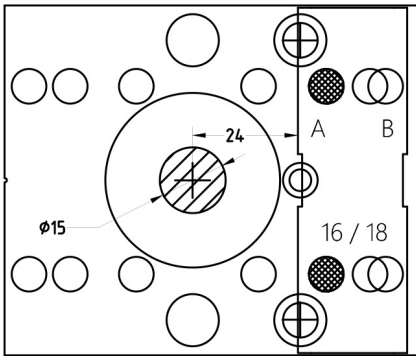


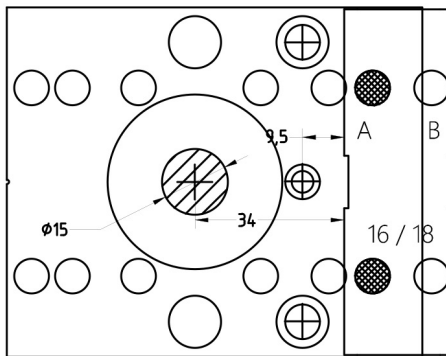
# SCHEMAT MONTAŻU SZABLONU

1. MINIFIX (EURO 24)

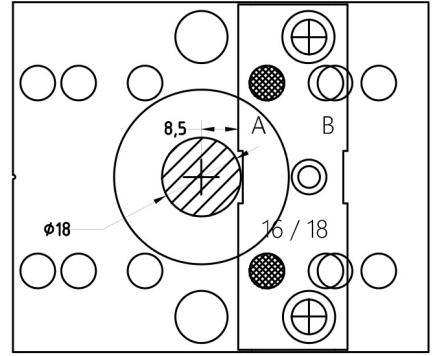


2. MINIFIX (EURO 34)

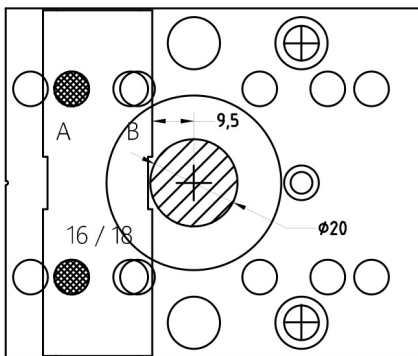
KONFIRMAT,  
KOŁKI MONTAZOWE



3. ZŁĄCZE TAB 18

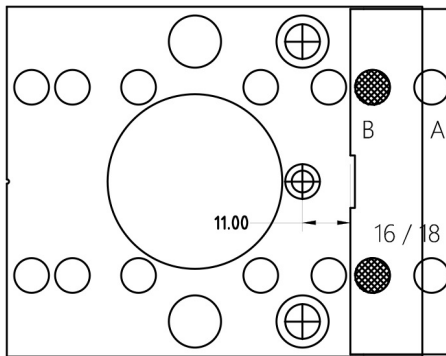


4. ZŁĄCZE RAFIX 18

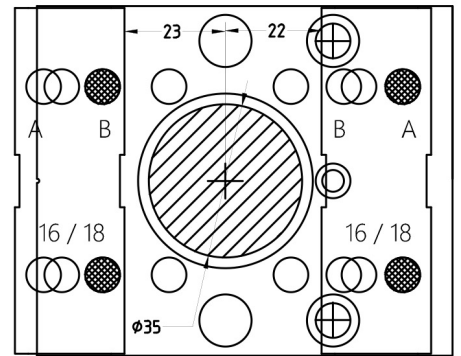


5. MINIFIX KONFIRMAT,  
KOŁKI MONTAZOWE

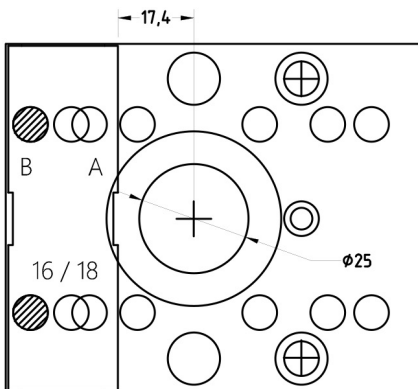
(ODLEGŁOŚĆ OD KRAWĘDZI 11 MM)



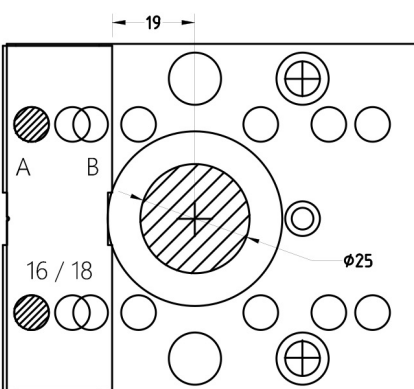
6. ZAWIAS (35 MM)



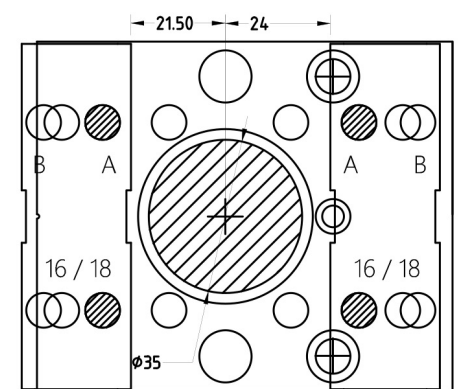
7. TOFIX 25 MM



8. TOFIX 25 MM

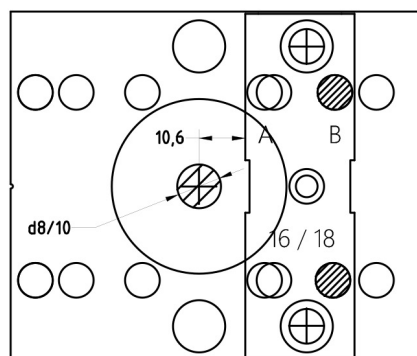
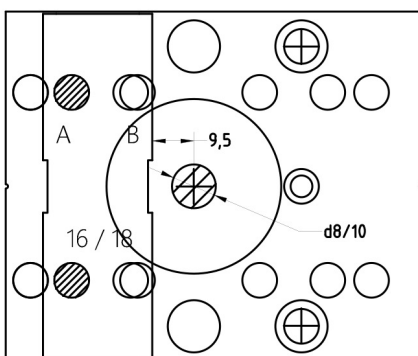


9. ZAWIAS (35 MM)



10. WIERCENIE W PŁASZCZYZNIE 8/10 MM

KONFIRMAT, MINIFIX Z MUFA ̄ WBIJANĄ



PRZEWODNIK ŚREDNI

